

# OUR CAPABILITY PORT AND MARINE



BMD has successfully delivered major port and marine projects, which include marine structures, container terminals, wharf refurbishments, coal terminals, ocean outfalls and seawalls. Our project teams have an in-depth understanding of the scope and methodologies required when working within time critical and operational port and marine environments to deliver successful projects through scheduling, planning, resourcing and execution of critical activities.

## WHAT SETS US APART FROM THE REST?

### INNOVATIVE CONSTRUCTION AND ENVIRONMENTAL COMMITMENT

- Innovative construction methods to help minimise noise and vibration, and expertise in groundwater management options for construction works, including re-use for dust suppression and discharge to trade waste.
- Capability and experience in integrating Light Emitting Plasma (LEP) technology to port and marine infrastructure, providing efficient and reliable lights with an extended lifetime, seamless control, rapid start and restrike. With a high efficiency directional point source they can be controlled, programmed and monitored remotely through an application from any smart device.
- Innovative solutions to challenging geotechnical conditions through cost effective ground improvement strategies controlling site settlement, and a commitment to early identification and mitigation of risks to meet industry best practice and legislative requirements.

### RELATIONSHIP-BASED COLLABORATIVE APPROACH

- Established long-term relationships, which have led to repeat business as a trusted partner in port and marine projects demonstrated by our success both nationally and internationally.
- Commended by clients for our commitment to minimising impacts to stakeholders including port tenants, local businesses and the residents of the communities in which we operate. Our project teams develop high quality corporate and strategic communications, ensuring the timely resolution of enquiries and complaints.
- Strong commitment to achieving reconciliation and promoting equal opportunities by working in partnership with local Indigenous and non-Indigenous organisations who embody our values.

### SUSTAINABILITY IN THE MARKET

- Expertise to self-perform port and marine projects from concept and design work through to construction in multi-disciplinary live operational environments enabling BMD to set construction standards, control project costs, establish quality and safety standards, and respond to project scope changes efficiently.
- Achieving successful health, safety, environment and quality (HSEQ) outcomes on projects through strictly adhering to company policy, with performance acknowledged through industry awards.



## THE BMD WAY

What makes BMD different is our value system, unique culture and general commitment to all staff. BMD demonstrates a high level of commitment to employees who support our belief that 'our business is our people'. BMD's culture and relationship-based approach to projects remains our point of difference as we continue to grow and be supported by our loyal client base. Our expertise helps to overcome project challenges, achieve efficiencies and quality standards, and most importantly, deliver projects without incident.

## FINANCIAL PERFORMANCE

Since establishment in 1979, BMD has enjoyed strong growth, and now consistently exceeds \$1.5 billion annual revenue.

BMD is supported by stringent management systems, a strong balance sheet and prudent financial management.

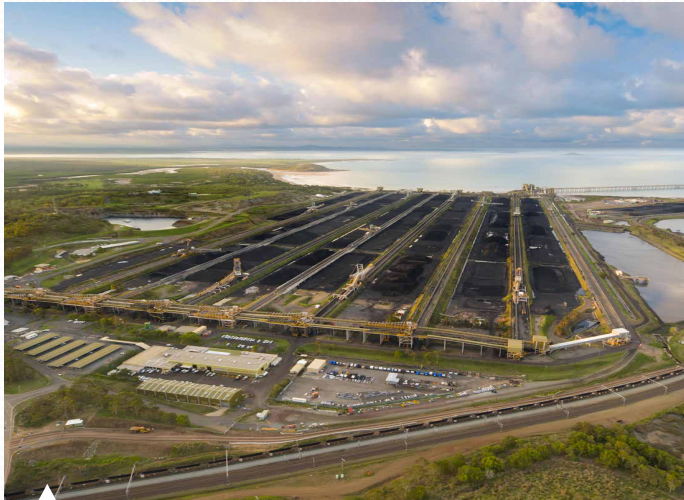
## HSEQ EXCELLENCE

The safety of our people, the environment and community are BMD's highest priority. BMD holds industry-recognised multi-site certifications for health, safety, environment and quality management systems, as part of our integrated Business Management System. We are committed to an uncompromised safety culture and strive to achieve HSEQ excellence.

# KEY PROJECTS PORT AND MARINE



Design, construction and maintenance of exceptional port and marine infrastructure in Australia and the Philippines.



## QUEENSLAND

### HAY POINT PHASE 3 EXPANSION

\$175 million | BM Alliance Coal Operations Pty Ltd and Bechtel Australia Pty Ltd



### DALRYMPLE BAY COAL TERMINAL 7X EXPANSION

\$102 million | DBCT Management Pty Ltd

★ 2009: Engineers Australia Excellence Award

“BMD’s safety performance was exemplary, including the way in which the onsite project team embraced the project’s safety standards with a strong commitment at all times. The BMD contract man hours were a significant contribution to the first million hours lost time injury free.”

**Andrew Mecoles**  
Civil, Environmental and Logistics Manager,  
DBCT Management Pty Ltd

## THE PHILIPPINES

### MICT BERTH 7 – DESIGN AND CONSTRUCT

\$88 million (PHP 3.1 billion) | International Container Terminal Services Incorporated



## NEW SOUTH WALES

### PORT BOTANY TERMINAL EXPANSION

\$57 million | Patrick Corporation

### MAYFIELD WHARF REFURBISHMENT

\$29 million | Newcastle Port Corporation



## VICTORIA

### VICTORIA INTERNATIONAL CONTAINER TERMINAL

\$200 million plus | Victoria International Container Terminal Ltd

★ 2017: National Infrastructure Awards  
Smart Infrastructure Project Award



### SPIRIT OF TASMANIA CORIO QUAY

\$60 million | GeelongPort

## SOUTH AUSTRALIA

### CHRISTIES BEACH WASTEWATER TREATMENT PLANT OUTFALL

\$14.3 million | South Australia Water

★ 2010: Civil Contractors Federation  
Earth Award (state level)

### FLINDERS PORT BERTH 29 REMEDIATION

\$1.2 million | Flinders Ports Pty Ltd



## NORTHERN TERRITORY

### DARWIN SHIP LIFT

\$455 million | Northern Territory Government

